

brand	MCCULLOCH
-------	-----------

date	MAY/03	SHEET 1/4
------	--------	-----------

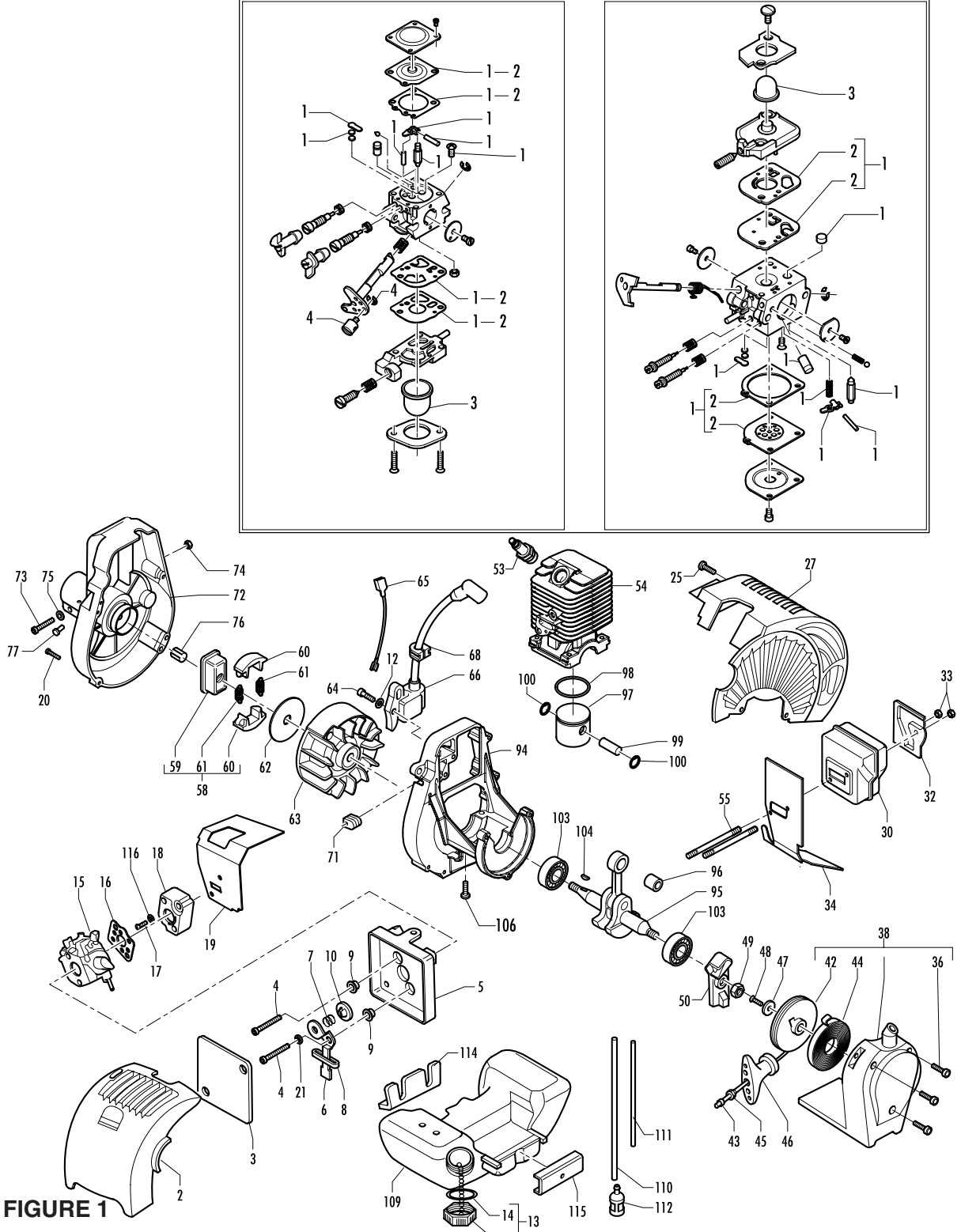
Model	Prefix
<b>CABRIO 246</b>	01

Product number
<b>953900242</b>

**FIGURE 2**

**WALBRO WT 547**

**ZAMA C1Q M38**



**FIGURE 1**

brand	<b>MCCULLOCH</b>
-------	------------------

date	MAY/03	SHEET 2/4
------	--------	-----------

Model	Prefix
<b>CABRIO 246</b>	01

Product number
<b>953900242</b>

**FIGURE 1**

pos	P/N McC	P/N ELX	Qty	DESCRIPTION
2	242703	538242703	1	filter cover
B 3	242035	538242035	1	air filter
4	235808	538235808	2	screw 5x50
5	248485	538248485	1	filter housing ass'y
6	• 241769	538241769	1	choke lever
7	• 235822	538235822	1	choke shutter spring
8	• 241622	538241622	1	plastic spacer
9	• 227022	538227022	2	spacer
10	• 241602	538241602	1	shutter choke
12	235248	538235248	2	washer
B 13	236563	538236563	1	fuel cap ass'y
A 14	• 236564	538236564	1	cap seal
C 15	<b>FIGURE 2</b>			
A 16	241600	538241600	1	spacer/gasket
17	235806	538235806	2	screw M5x20
C 18	241750	538241750	1	spacer
B 19	242034	538242034	1	cylinder gasket
20	227568	538227568	4	screw M4x20
21	235248	538235248	1	washer
25	241963	538241963	2	screw M4x22
27	242704	538242704	1	engine cover
C 30	242131	538242131	1	muffler
32	323760	538323760	1	muffler shield
33	235642	538235642	2	nut M5
B 34	242036	538242036	1	muffler gasket
36	241963	538241963	3	screw M4x20
C 38	242041	538242041	1	starter ass'y
B 42	• 241620	538241620	1	starter pulley
A 43	• 241746	538241746	1	starter rope
B 44	• 241619	538241619	1	starter spring
45	• 235612	538235612	1	washer
46	• 241778	538241778	1	starter handle
47	• 241703	538241703	1	washer
48	• 240862	538240862	1	screw M4x18
49	241624	538241624	1	M8 nut
50	241784	538241784	1	starter pawl ass'y
A 53	92879	538092879	1	RDJ&J spare plug
C 54	241800	538241800	1	cylinder
55	242037	538242037	2	muffler stud bolt
B 58	241793	538241793	1	clutch ass'y
59	• 241789	538241789	1	clutch hub
60	• 241743	538241743	2	clutch shoe
A 61	• 241794	538241794	2	spring
62	241604	538241604	1	clutch dust shield

pos	P/N McC	P/N ELX	Qty	DESCRIPTION
63	241796	538241796	1	flywheel
64	235806	538235806	2	screw M5X20
65	241606	538241606	1	ground cable
C 66	241749	538241749	1	ignition coil assembly
68	236322	538236322	1	grommet
71	• 241607	538241607	1	fair lead
C 72	241725	538241725	1	joint assembly
73	• 235803	538235803	1	screw M5X25
74	• 229524	538229524	1	fan baffle
75	• 235248	538235248	1	washer
76	• 228260	538228260	1	pin
77	236981	538236981	1	screw 3,5X 9,5
94	242029	538242029	1	engine crankcase
95	242003	538242003	1	crankshaft assembly
C 96	• 235742	538235742	1	needle bearing
C 97	248177	538248177	1	piston kit
B 98	• 240002	538240002	1	piston ring
99	• 241735	538241735	1	pin
100	• 235008	538235008	2	retaining ring
C 103	242030	538242030	2	grommet/bearing assembly
C 104	227631	538227631	1	key
106	235803	538235803	4	screw M5X25
C 109	242040	538242040	1	fuel tank assembly
B 110	• 229717	538229717	1	oil hose
B 111	• 229743	538229743	1	fuel hose
A 112	93720	53893720	1	fuel pick up
114	242038	538242038	1	fuel gasket
115	242039	538242039	1	tank holder
116	235248	538235248	2	washer

**FIGURE 2 WALBRO WT 547**

pos	P/N McC	P/N ELX	Qty	DESCRIPTION
C -	241601	538241601		carb.
B 1	• 324013	538324013	1	K 20 WAT rep. Kit
A 2	•• 324009	538324009	1	D 20 Diaph. Kit
C 3	• 225834	538225834	1	primer bulb
4	• 224466	538224466	1	swivel /carb. Kit

**FIGURE 2 ZAMA C1Q M38**

pos	P/N McC	P/N ELX	Qty	DESCRIPTION
C -	241824	241824		carb.
B 1	• 300465	300465	1	RB 28 Z carb rep. Kit
A 2	•• 300473	300473	1	Diaph gasket kit
C 3	• 246946	246946	1	primer bulb

A= ALTA ROTAZIONE  
B=MEDIA ROTAZIONE  
C=BASSA ROTAZIONE

A=HIGH MOVING  
B=MEDIUM MOVING  
C=SLOW MOVING

A=HAUTE DEMANDE  
B=MOYENNE DEMANDE  
C=BASSE DEMANDE

A=GROßE NACHFRAGE  
B=MITTELMAEBIGE  
C=WENIGE NACHFRAGE

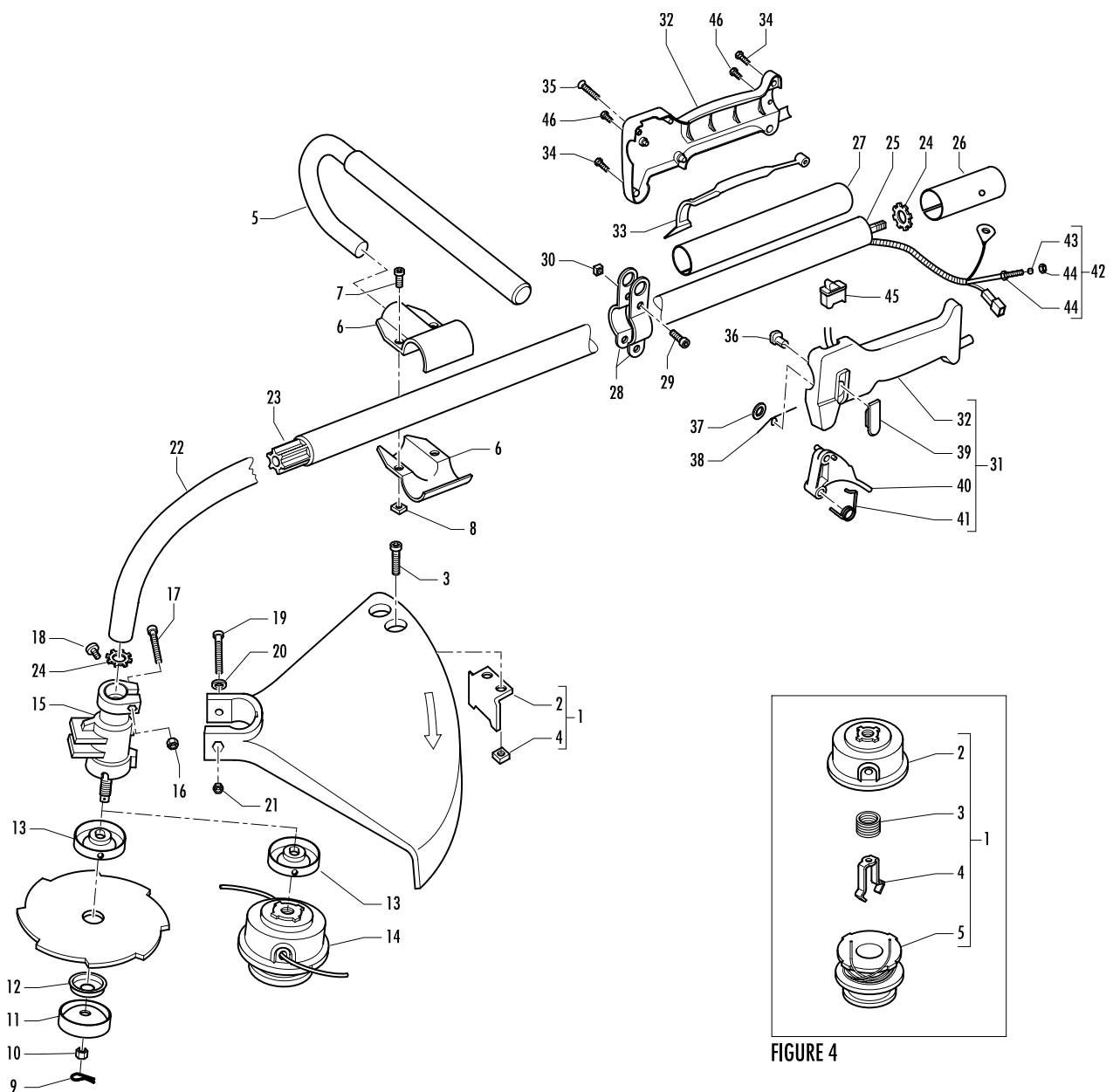
brand	<b>MCCULLOCH</b>
-------	------------------

date	MAY/03	SHEET 3/4
------	--------	-----------

Model	Prefix
<b>CABRIO 246</b>	01

Product number
<b>953900242</b>

**FIGURE 3**



**FIGURE 4**

brand	MCCULLOCH
-------	-----------

date	MAY/03	SHEET 4/4
------	--------	-----------

Model	Prefix
<b>CABRIO 246</b>	01

Product number
<b>953900242</b>

**FIGURE 3**

pos	P/N McC	P/N ELX	Qty	DESCRIPTION
B 1	229956	538229956	1	grass shield
2	• 241973	538241973	1	line cutter
3	• 235802	538235802	2	screw m5x14
4	• 235642	538235642	2	m5 nut
5	241736	538241736	1	"J" handle
6	228146	538228146	2	clamp
7	235811	538235811	2	benzing D 3,2
8	235542	538235542	2	M6 nut
A 9	236728	538236728	1	pin
A 10	241739	538241739	1	blade nut 3/8 24
A 11	236596	538236596	1	hub
A 12	236621	538236621	1	blade plate
A 13	241734	538241734	1	flange
A 14	<b>FIGURE 4</b>			string head assembly
15	241740	538241740	1	blade housing assembly
16	235912	538235912	1	M6 nut
17	235921	538235921	1	screw M6 X 30
18	228160	538228160	1	screw 4,8 X 10
19	228161	538228161	1	screw M6 X 50
20	236936	538236936	1	washer
21	235912	538235912	1	M6 nut
22	241728	538241728	1	outer shaft assembly
23	• 241730	538241730	1	sheat
24	• 241745	538241745	2	retainer ring
C 25	241733	538241733	1	flex shaft 1510
26	241838	538241838	1	bush
27	241727	538241727	1	bush
28	248222	538248222	2	harness ring assembly
29	• 235911	538235911	2	screw M6 X 12
30	• 236642	538236642	2	M6 nut
31	227280	538227280	1	trigger assembly
32	• 246955	538246955	1	handle kit
33	•• 229819	538229819	1	safety trigger
34	• 240618	538240618	2	screw M 3x16
35	• 240833	538240833	4	screw M 3x20
36	• 229823	538229823	1	throttle pin
37	• 227065	538227065	1	benzing D 9,4
38	• 229973	538229973	1	trigger spring
39	• 229824	538229824	1	throttle snap
40	• 241296	538241296	1	trigger
41	• 240091	538240091	1	spring
C 42	• 227067	538227067	1	wires assembly

pos	P/N McC	P/N ELX	Qty	DESCRIPTION
C 43	•• 227073	538227073	1	gas wire
44	•• 235912	538235912	2	M6 nut
C 45	•• 236394	538236394	1	stop switch
46	236981	538236981	2	screw 3,5 X 9,5

**FIGURE 4**

pos	P/N McC	P/N ELX	Qty	DESCRIPTION
A 1	248206B	538248206	-	string head ass'y
2	• 530053246	530053246	1	s.m.cover
3	• 530053241	530053241	1	spring
4	• 530401957	530401957	1	spool retainer
B 5	• 248286B	538248286	1	2mm spool line

A= ALTA ROTAZIONE  
B=MEDIA ROTAZIONE  
C=BASSA ROTAZIONE

A=HIGH MOVING  
B=MEDIUM MOVING  
C=SLOW MOVING

A=HAUTE DEMANDE  
B=MOYENNE DEMANDE  
C=BASSE DEMANDE

A=GROBE NACHFRAGE  
B=MITTELMÄßIGE  
C=WENIGE NACHFRAGE